

KANSAS ATTORNEY GENERAL'S

**MEDICAID FRAUD
AND ABUSE DIVISION**

ANNUAL REPORT

2010-11

Table of Contents

History of the Unit

Mission Statement

Compliance with Federal Performance Standards

Funding

Staffing

Training

Performance and Projections

42 C.F.R. § 1007.17 Information

Significant Cases

Public Awareness

Partnerships and Other Relationships

Issues and Recommendations

Appendixes A-D

The Medicaid Fraud and Abuse Division of the Kansas Attorney General's Office is the Medicaid Fraud Control Unit for the State of Kansas. (Kansas Statutes Annotated 21-3852). This annual report covers the reporting period of July 1, 2010, through June 30, 2011, and provides the information required by 42 C.F.R. § 1007.17. It is submitted in conjunction with the re-certification questionnaire requested by the Office of Inspector General.

HISTORY OF UNIT

The Unit was established pursuant to legislation enacted by the Kansas Legislature in 1995. The Unit operates under the statutory authority granted at Kansas Statutes Annotated 21-3846, et seq. The Unit received certification in 1995 and has been granted recertification each year since. The Unit is a division within the Kansas Attorney General's Office.

Attorney General, Derek Schmidt has made protecting Kansans from fraud a priority since taking office January 10, 2011. Schmidt has stated he will devote the necessary resources and time to aggressively investigate and prosecute those who commit fraud and abuse against the elderly.

MISSION STATEMENT

The Medicaid Fraud and Abuse Division of the Kansas Attorney General's Office is dedicated to the identification, investigation and litigation of conduct involving health care provider fraud committed against the Kansas Medicaid program, as well as physical abuse or neglect, and financial exploitation of patients in residential care facilities.

COMPLIANCE WITH FEDERAL PERFORMANCE STANDARDS

The Unit is required to comply with specific performance standards outlined by the federal government. This Annual Report, along with the responses to the Recertification Questionnaire, will demonstrate that the Unit is in compliance with each of the Federal Performance Standards.

FUNDING

The Unit is funded 75% by the federal grant and 25% by State of Kansas matching funds. The total budget for FY2011 is \$1,617,913.00, which includes indirect costs.

A copy of the FY2011 budget for the Unit is included as Appendix A.

STAFFING

The Unit is currently staffed with a Deputy Attorney General, who serves as the Director of the Unit, three (3) Assistant Attorneys General, a Senior Research Analyst, a Research Data Analyst, a Special Agent-In-Charge, five (5) Special Agents, a Legal Assistant, and an Administrative Assistant.

The Unit had also employed a part-time Legal Intern, a student from the local law school for approximately half of the reporting period, a position that is currently vacant. The Unit also has positions for a Nurse Investigator and a Financial Analyst/Auditor that became vacant at or about the transition period to the new Attorney General. Efforts are underway to fill these positions.

Due to budget constraints the paralegal position reported in previous periods has been removed from our staffing numbers.

Staff/Qualifications

The Director of the Unit is a Deputy Attorney General, having worked for the Kansas Attorney General's Office for almost ten (10) years and having more than eight (8) years experience prosecuting white collar and other crimes in the Unit. The Director is cross-designated as a Special Assistant United States Attorney, having led or participated in at least six (6) federal fraud cases. Two (2) of these cases resulted in convictions after a jury trial, three resulted in convictions from plea, and the final matter is currently pending.

The assistant Attorneys General have varied experiences that make them vital to the Unit. One has an extensive background in criminal prosecution, both white collar and violent crimes, while the other came to us from a civil background and has developed into an outstanding prosecutor. One of the prosecutors is presently cross-designated as Special Assistant United States Attorneys, and the other will likely receive cross-designation status during this next year. In addition, we have an assistant Attorney General with vast experience in handling complex civil litigation. He has been given the responsibility of pursuing civil matters on behalf of the Unit and the State of Kansas. He was recently cross-designated to handle civil cases on behalf of the government in federal court.

The Special Agent in Charge has extensive experience investigating all types of crime. Before joining the Unit he served as the Sheriff of Jackson County, Kansas on two separate occasions. He brings a wealth of knowledge and practical experience to the Unit.

The Special Agents are all certified Law Enforcement Officers, with a combined total of over 75 years of experience between the five (5) of them, each possessing special skills that make them very valuable to the Unit.

During this past year we reorganized the analytical aspect of our Unit. One of our Analysts had consistently demonstrated her abilities to not only complete the work assigned to her, but also to take on a supervisory role as relates to the other analysts. As a result, and after much discussion and consideration, she was promoted to Senior Research Analyst. During this reporting period she became certified as a Fraud Examiner.

Our Research Data Analyst actually fills multiple roles in the Unit. He is an assistant Attorney General, serving as a backup to the attorneys on staff. His primary role is to handle data analysis in global matters in which the State is involved. His technical background has been invaluable in assisting with data requests and analysis in cases investigated by the Unit. Furthermore, he has played an instrumental role in assisting with the implementation of the new case management system being utilized by the Unit.

Finally, the Unit has two (2) support staff, a Legal Assistant and an Administrative Assistant. The Legal Assistant serves multiple roles assisting prosecutors with trial work while at the same time providing invaluable assistance to the investigative staff. The Administrative Assistant is the newest member to the Unit and has really gotten herself involved and acclimated herself to the Unit.

An organizational chart of the Unit, reflecting the changes set forth above, is included as Appendix B, as is an organizational chart of the Kansas Attorney General's Office.

TRAINING

The Unit has committed itself to providing each and every staff member with the opportunity to experience a wide variety of training targeted at educating them on the skills and techniques needed to understand and perform the duties related to their respective positions. It remains the focus of the Unit to seek out and provide training opportunities to Unit staff that will serve them in their various capacities as employees of the Unit.

The current reporting period saw a significant effort to permit staff to participate in opportunities to train others. In previous years this responsibility had fallen primarily on the Director of the Unit and one or two other staff. As the Unit continues to develop areas we will seek out additional venues in which to deliver our message.

A chart detailing all training received by the staff of the Unit is included as Appendix C.

PERFORMANCE AND PROJECTIONS

Performance by the Unit continues to improve, as is demonstrated by the statistics set forth below. As the Unit continues to adapt to changes that have been made, and make additional changes to the manner in which cases are handled, it is projected that the Unit will become much more efficient. The anticipated result is that the Unit will see improved statistics when compared to years past. At the same time, it is recognized that there will likely be a much higher number of referrals to the Unit, especially in light of the emphasis being placed on combating elder abuse, and the effort being made to create an awareness of what the Unit does.

42 C.F.R § 1007.17 INFORMATION

- (a) The number of investigations initiated and the number completed or closed, categorized by type of provider are:

	Initiated Cases	Closed Cases
FRAUD		
1. Hospitals	0	0
2. Nursing Facility	0	0
3. Other Long Term Care	0	0
4. Substance Abuse Treatment Centers	1	0
5. Other Facilities	0	0
6. MD/DO	2	4
7. Dentists	0	0

8. Podiatrist	0	0
9. Optometrist/Optician	0	0
10. Counselor/Psychologist	0	1
11. Chiropractor	0	0
12. Other Practitioners	0	0
13. Pharmacy	2	1
14. Pharmaceutical Mfr.	13	22
15. DME	0	3
16. Lab	0	0
17. Transportation	2	6
18. Home Health Care Agency	5	6
19. Home Health Care Aides	41	33
20. All Nurses/PA/NP	1	2
21. Radiology	0	0
22. Other Medical Support	0	1
23. Managed Care	0	0

24. Medicaid Program Administration	0	0
25. Billing Company	0	1
26. Other Program Related	0	0
ABUSE & NEGLECT		
27. Nursing Facility	0	0
28. Other Long Term Care	0	1
29. Registered/Licensed/Nurse/PA/NP	0	2
30. CNA	0	4
31. Home/Personal Care Aide	0	0
32. Other Abuse & Neglect	1	2
PATIENT FUNDS		
33. Non-Direct Care	5	3
34. Registered/Licensed Nurse/PA/NP	0	0
35. CNA	0	0
36. Other Patient Funds	10	9
TOTAL	83	101

(b) Current Case Activity

Open Cases as of 07/01/2010	181
Cases Initiated During Period	83
Less: Cases Closed/Completed	(101)
Open Cases as of 06/30/2011	163

Number of cases prosecuted or referred for prosecution:

- 19 Criminal cases were filed/prosecuted by the Unit**
- 4 Civil cases were filed by or on behalf of the Unit**
- 0 Cases were referred to other agencies for prosecution**

Number of cases finally resolved and their outcomes:

- 17 Cases resulted in convictions by pleas of guilty or no contest**
 - 2 Convictions resulted in incarceration of defendant**
 - 15 Convictions resulted in probation**
- 0 Cases were completed through Pretrial Diversions**
- 0 Case resulted in acquittal by a judge or jury**
- 8 Cases were settled in civil court by Settlement Agreement**
- 0 Cases resulted in civil judgments after trial**

Number of cases investigated but not prosecuted due to insufficient evidence:

64 Cases were investigated and closed without prosecution

(c) Number of complaints/referrals received regarding abuse and neglect of patients in health care facilities:

Every report received by the Kansas Department on Aging regarding potential abuse, neglect or exploitation occurring in healthcare facilities, as well as those reports received from consumers or the public, is reviewed. Those involving serious allegations, which warrant additional investigation, are staffed and an official investigation file is opened. There were 4979 complaints reviewed by the Unit that involved reports submitted to the Kansas Department on Aging.

The Unit received 32 referrals of abuse, neglect or exploitation from other agencies.

The Unit received 9 referrals of abuse, neglect or exploitation from individuals or private entities.

Number of such complaints investigated by the Unit:

The Unit opened investigations in 0 cases that were referred by the Kansas Department on Aging, or that were learned about during the course of a review of Aging records.

The Unit opened 8 investigations based on referrals from other agencies, and 4 investigations based upon referrals from private referrals.

Number of such complaints referred by the Unit to other state agencies:

The Unit referred 7 complaints alleging abuse, neglect or exploitation to other federal, state or local agencies.

(d) Recovery Actions

Number of recovery actions initiated by the Unit:

The Unit does not normally engage in recovery actions, instead referring those matters to the Single State Agency to be handled under their administrative hearing process.

Number of recovery actions referred to another agency:

There were 6 cases referred to other agencies, including the Single State Agency, for recovery actions.

Total amount of overpayments identified by the Unit:

For this reporting period the Unit identified and referred to the Single State Medicaid Agency matters of apparent overpayments that do not rise to the level of criminal or civil action against the provider. Thus, the determination of the amount of overpayment in those instances was left up to the Single State Medicaid agency.

Number of recovery actions initiated by the Single State Medicaid Agency under its agreement with the Unit:

The Unit has no way of independently tracking the number of actions initiated by the Single State Agency and must rely on the information provided to us by that agency.

For this reporting period, 147 recovery actions were reported as having been initiated by the Single State Medicaid Agency as administrative recoupments under its agreement with the Unit.

(e) **Overpayments Collected**

Total amount of overpayments collected by the Unit:

Global Cases:

\$12,472,534.12 (This number includes both the federal and state shares of global case settlements pursued in conjunction with the National Association of Medicaid Fraud Control Units, but does not include any penalties, attorneys fees or costs recovered in those settlements.)

Criminal Cases:

\$665,992.70 was ordered as restitution in criminal fraud cases completed by the Unit in which a conviction was obtained. This amount will be collected by the Single State Medicaid Agency. (See Page 15).

\$248,428.18 was ordered as restitution in criminal abuse cases completed by the Unit in which a conviction was obtained.

Civil Cases:

\$14,748,165.79 was ordered as a result of civil judgments obtained by the Unit. The proceeds of these settlements were paid to the Single State Agency.

Total amount of overpayments actually collected by the Single State Medicaid Agency under its agreement with the Unit:

The Unit has no way of independently tracking the overpayments actually collected by the Kansas Health Policy Authority, and must rely on the information provided to us by that agency. Pursuant to the MOU, the Single State Medicaid Agency prepares a quarterly report showing all overpayments collected on the criminal convictions obtained by the Unit.

For this reporting period, \$18,797.64 in overpayments were reported as having actually been collected by the Single State Medicaid Agency under its agreement with the Unit, pursuant to criminal convictions obtained by the Unit.

In addition, \$2,090,661.71 in overpayments were reported as having been identified for recoupment by the Single State Medicaid Agency under the administrative recoupment process, and \$2,995,330.95 was actually recouped. The Single State Agency has \$8,567,150.06 outstanding in administrative recoupments.

(f) Projections for next 12 months:

145 Fraud cases projected to be referred to the Unit

4,500 Abuse cases projected to be referred to the Unit

105 Investigations projected to be opened

25 Cases projected to be filed as criminal cases

25 Cases projected to be completed, obtaining a criminal conviction

3 Cases projected to be filed as civil false claims matters

6 Cases projected to be finalized to civil judgment

130 Total cases projected to be closed

(g) Costs incurred by the Unit:

Total federal and state direct costs during this reporting period:

\$1,213,982.26

Total federal and state indirect costs during this reporting period:

\$118,660.00

Total Costs incurred by the Unit:

\$1,332,642.26

(h) Evaluation narrative of the Unit's performance during the period of time covered by this report:

The Unit enjoyed another successful year from a statistical standpoint. The Unit again managed to post statistics that surpassed previous years. The Unit reported total recoveries to the Kansas Medicaid Program in excess of \$27.2 million. This exceeded the \$21 million recovered in FY 2010. With the ongoing AWP litigation, in which the Unit has taken an active role in assisting outside counsel, as well as the newly formed civil section, it is anticipated that the Unit will continue to show outstanding results. In addition to our growing civil case load and the tremendous results expected from our criminal cases, the upcoming year should see the first of many of the trials in the State's ongoing AWP litigation.

During this past year, in response to the enactment of the Kansas False Claims Act, the Unit created a section to specifically handle matters of a civil nature. The result was that the Unit finally had an option for handling those cases that certainly involved fraud, but that fell short of being "criminal". The Unit completed its first civil case during this past year, resulting in a recovery for the State that might not have been realized otherwise. Although this was not a large case from a financial standpoint, it was a terrific beginning point for the Unit's civil section.

Despite the tremendous success realized by the Unit, the continuing storyline revolves around the ongoing struggle to keep up with our increasing criminal caseload. While the addition of our civil litigator and a sixth Special Agent have provided some relief, allowing some cases to be shifted to the civil section, the distribution and completion of cases continues to be a challenge for the Unit. The Unit continues to receive referrals of cases involving more complex and time consuming issues, making the task of balancing the caseload with available resources that much more difficult. While we do continue to receive and investigate a number of the basic, less complex cases, providers continue to develop new schemes, requiring new and innovative methods of investigation and general case handling.

As was reported in the previous reporting period, the benefits of the civil section have finally started to be realized. This past year saw the Unit complete our first civil settlement of a case. It is important to note that this case would likely have been closed for lack of prosecution had the new false claims act not been enacted. Instead, the net result was a settlement resulting in repayment of fraudulently obtained funds to the Kansas Medicaid program. The assistant Attorney General assigned to this section has stepped right in and been able to hit the ground running. In addition he has served as our State's representative in the ongoing Wyeth Best Price litigation. Finally, he has taken on some additional responsibilities involving potential civil litigation (i.e., forfeiture proceedings in fraud cases) that could result in additional returns to the Unit and the Single State Agency. The experience and abilities he offers have already been a tremendous boost to the Unit and we are excited about the prospects he brings for the future.

On the legislative front, the Unit revisited the legislation proposed last legislative session regarding the active exploitation of the elderly and vulnerable adults, through the use of Durable Powers of Attorney. Because of the Unit's expertise in working with abuse and exploitation matters, the Unit was requested to provide input on the recommended changes. While the legislation was better received this year than in previous years, the resistance to change was still too great to overcome and the matter was tabled in committee. There are a number of legislative proposals that are being developed at this time for future consideration.

Last, but certainly not least, success was realized in the AWP litigation that was filed on behalf of the State of Kansas in 2008. Although the state has retained outside counsel to handle these matters, the Unit has remained active in managing various aspects of these cases. For example, in three of the cases, Unit staff was called on to assist and provide oral arguments counter to defense motions to dismiss. As these cases start moving from initial settlement discussions to the litigation, the Unit will continue to provide assistance where needed and appropriate.

SIGNIFICANT CASE(S) FOR REPORTING PERIOD

United States v. White-Kinchion

This matter is significant because it marks the culmination of more than 4 years of investigation into a large home health care provider in Kansas. According to the indictment, Caela White-Kinchion while employed as the Director of Nursing of ProActive Home Care, Inc., was allegedly engaged in a continuing conspiracy and scheme to defraud Medicaid by submitting and causing others to submit claims to Medicaid for home health services that were not provided, were upcoded, were supported by false, fraudulent and forged documentation, and that were not medically necessary. More than \$23.4 million was paid to ProActive by the Kansas Medicaid program during the period of time covered by the alleged conspiracy. The matter was indicted in United States District Court of the District of Kansas in March of 2011 and is set for trial in August of 2012.

Southeast Kansas Shuttle

This case's significance is not based upon the amount of fraud involved, but rather from what it represents. This served as the Unit's first foray into the civil arena. This case was destined for closure due to the inability to meet the criminal burden of proof. After reviewing the matter under a civil theory, a demand letter was sent to the owner of the company, resulting in a settlement of the matter for the amount of \$5,800.00, which represented restitution to the Medicaid program. Again, the significance of this case rests on the simple fact that these were dollars that would not have been recovered but for the enactment of the Kansas False Claims Act. At this time the Unit is negotiating a second settlement to conclusion and is looking forward to tremendous future returns.

PUBLIC AWARENESS

The Unit continues to be dedicated to providing education to Medicaid providers, health care providers, state workers, social workers, and the general public about the issues of health care fraud and abuse, neglect and exploitation that are occurring in our state and around the nation. Furthermore, it has been a matter of significance to the Attorney General that this Unit seize upon every opportunity to work with and educate the public. Along those lines, the Unit was given the unique opportunity to make a presentation at a conference sponsored by one of the MCOs. It provided a chance to reach out to a provider network and educate them proactively on the efforts of the Unit. This provided a very welcome opportunity to educate those that stand to lose the most if they commit fraud. The Unit already has a additional presentations scheduled to providers in the community, and is actively seeking additional opportunities.

The Unit, again, teamed with the Attorney General’s Consumer Protection Division to operate an informational booth at the Kansas State Fair. This provides a great opportunity for members of our staff to meet with the public and answer questions specifically about the Unit and create further public awareness about the efforts of the Unit.

The Unit has been asked to conduct a statewide training for law enforcement officers specific to investigating elder abuse. Preliminary planning is underway to find other agencies willing to partner with the Unit in this endeavor, and we hope to hold this training during calendar year 2012.

This past year, the Unit was approached by the United States Attorney about the prospect of re-establishing a Kansas Healthcare Fraud Working Group. The group has now met 3 times in the past year. There are meetings scheduled each quarter of the year in a different part of the state, to allow as many people to attend as possible. Various staff members of the Unit have taken an active role in planning these meetings, as well as coordinating the agendas each quarter. This is a great opportunity to bring representatives together that have a common interest, to prevent fraud in health care. It has also allowed the Unit to make contact with additional resources that may be utilized in future investigations. Overall, this has been a very beneficial endeavor.

A chart setting forth the presentations made by staff of the Unit is set forth in Appendix D.

PARTNERSHIPS AND OTHER RELATIONSHIPS

The Unit has long recognized the importance of working with other agencies in the pursuit of fraud and abuse matters. Throughout this reporting period the Unit has been open to, and has participated in many groups that focus on prevention of fraud and abuse of the elderly. These have allowed the staff of the Unit to network with other experts in the field that may be able to assist in our cases.

The Unit has a tremendous working relationship with many federal agencies. Of particular note is the work that has been accomplished with the United States Attorney's Office for the District of Kansas. The Unit has consistently been invited to participate in cases initiated in federal court. In fact, this reporting period saw the indictment of a case in federal court, by the Unit, with the assistance of the United States Attorney's Office (United States v. Caela White-Kinchion). This case, as with many of the joint investigations the Unit engages in, would have been much more difficult without the resources contributed by our federal counterparts. The attorneys and agents of the Unit continue to explore ways that we can take advantage of outside resources that may be available.

The Unit continues to maintain a good working relationship with the Single State Medicaid Agency. For a number of years the Unit has participated in monthly meetings with the Single State Medicaid Agency, the fiscal agent and representatives from the various MCOs that contract with the Single State Agency. This has allowed us to maintain an open line of communication, thereby creating a better working relationship.

In addition to working well with federal agencies, the Unit continues to pursue working relationships with various state and local agencies. This has included becoming involved with a number of task forces. This includes remaining active with the Topeka Coalition against Adult Abuse ("TCAA"), which involves a number of local agencies, as well as the local prosecutor's office and law enforcement. With the growing magnitude of exploitation of the elderly it is very important that steps are taken to educate those on the front lines so that they know what to look for and where to report it once they notice possible abuse or exploitation. This relationship has permitted the Unit to reach out to a number of other agencies in order to foster awareness.

In addition to re-establishing the Kansas Healthcare Fraud Working Group, the Unit remains active in the Kansas City Metro Healthcare Fraud Working Group which has cultivated the development of positive relations across the Kansas-Missouri border.

ISSUES AND RECOMMENDATIONS

As I suspect is the case with every MFCU, the caseloads continue to be an issue. While the Unit staff has continued to improve at working through the cases, striving to reduce the overall turnaround time for each case opened, at the same time there has been an influx of more complicated, resource intensive cases. These cases, while rewarding at the conclusion, can pull very important resources from our “run-of-the-mill” cases that are handled on a regular basis. The Unit continues to review established criteria utilized in deciding whether to open a case. This has become particularly important with the recent enactment of federal regulation changes regarding automatic suspension of payments. With the prospect of having a provider suspended until such time as the Unit completes its investigation, and perhaps its litigation of the matter, there is an increasing awareness that the Unit must work through these cases even sooner. While this creates many potential problems, one of most concern is the possibility that mistakes may occur in hastily investigating a case. The Unit will continue to evaluate the situation throughout the next year and develop policy accordingly.

As with every reporting period, the Unit could have easily employed more staff to aid in the investigation of the many fraud and abuse referrals received throughout the year. The staff does a tremendous job with the time and resources they have, but many cases go uninvestigated due to a lack of manpower. The Unit continues to evaluate each case individually, while attempting to prioritize the most important cases. Many times that means good cases simply do not get handled, despite a tremendous effort by staff. As stated earlier, the recent enactment of federal regulations stemming from the health care reform continues to place more burdens on MFCUs across the nation, with little relief as relates to manpower issues. With state budgets being crippled by the economy, it is difficult, if not impossible, to request additional monies or additional staff positions. The end result is that each Unit, including ours, must learn to do more with less. While we added positions just two years ago to accommodate our new civil section, we realized a loss of a position this last year to compensate for the economic problems facing the state.

Another area of concern centers on the Single State Agency’s continued transition from fee-for-service towards the utilization of Managed Care Organizations to handle certain areas of the program. Again, with the economy looming over each state’s budget concerns, states are focusing on ways to control health care expenditures. The current wave is in favor of MCOs. This push could create a number of new issues for our Unit, primarily due to our lack of experience in working with MCOs in the battle against fraud. The Unit continues to work with the current MCOs in our state to better our understanding.

APPENDIX A

AWARD SUMMARY FORM

ACCOUNTING DATA

State:	KANSAS MEDICAID FRAUD AND ABUSE DIVISION
Grant Award Program:	93.775 State Medicaid Fraud Control Units
Employer Identification Number (EIN):	1-486029925-15
Appropriation Number:	75X0512
Commitment Number:	SMFCU - 17
Object Class:	41501
Document Number:	01-1101-KS-5050

BREAKDOWN OF AWARD

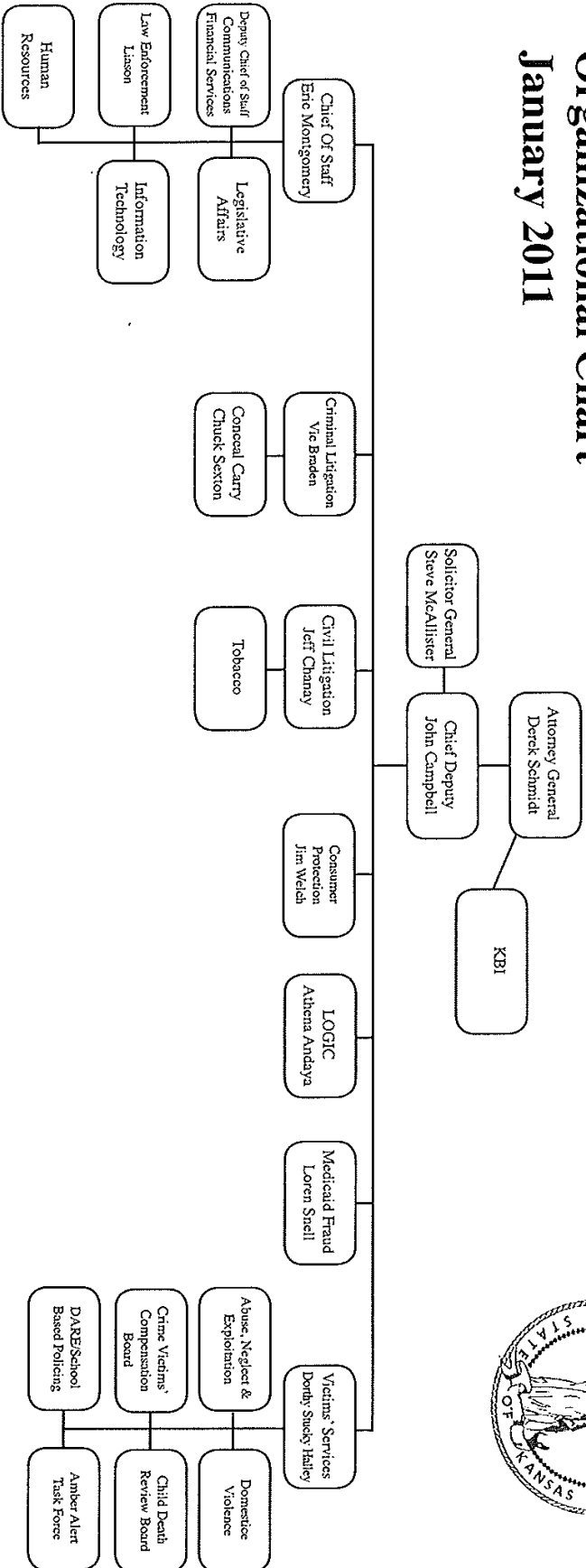
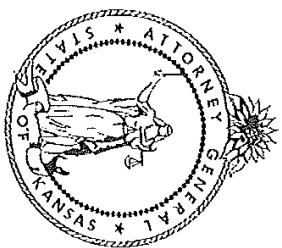
Quarter	Common Accounting Number	Federal Share	State Share	Total
10/01/10 - 12/31/10	1-1997500	\$303,500	\$101,167	\$404,667
01/01/11 - 03/31/11	1-1997500	\$303,500	\$101,167	\$404,667
04/01/11 - 06/30/11	1-1997500	\$303,500	\$101,167	\$404,667
07/01/11 - 09/30/11	1-1997500	\$303,500	\$101,167	\$404,667

AWARD INFORMATION

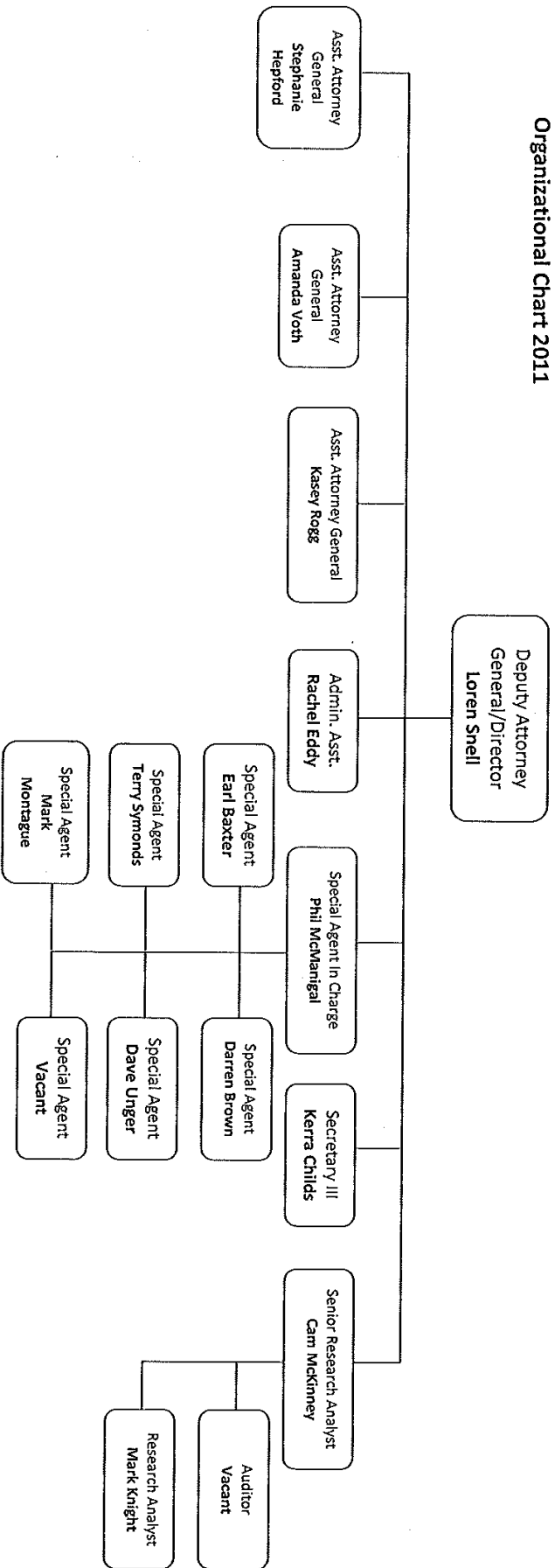
Funding Grant Period:	Fiscal Year 2011 (October 1, 2010 - September 30, 2011)
Approved Budget:	\$1,214,000
Adjustments:	
Expected Expenditures:	\$1,214,000
Federal Financial Participation:	75 percent
CONTACT PERSON:	Antonio Graham (202) 619-7774

RMS-3 (ASF 10/93)

Kansas Attorney General Derek Schmidt Organizational Chart January 2011



**Kansas Attorney General
Derek Schmidt
Medicaid Fraud & Abuse Division
Organizational Chart 2011**



APPENDIX C
OFFICE OF THE KANSAS ATTORNEY GENERAL
MEDICAID FRAUD AND ABUSE DIVISION

TRAINING 7/1/2010 – 6/30/2011

ATTENDEE	DATE	TRAINING & SPONSOR	LOCATION	TOTAL HOURS	ETHICS
Loren F. Snell, Jr.	9/23/10	Healthcare Fraud Trends, Etico	Webinar	.5	
	10/25/10	2010 Annual Training, NAMFCU	Tempe, AZ	11.00	
	04/07/11	Advising Clients on Sexual Harassment	Topeka, KS	1.00	
	04/07/11	CLE Update/Ethics	Topeka, KS	1.00	1.00
	06/17/11	Johnson Co. Law & Ethics	Olathe, KS	3.00	1.00
Stefani Hepford	9/23/10	Healthcare Fraud Trends, Etico	Webinar	.5	
	10/25/10	2010 Annual Training, NAMFCU	Tempe, AZ	11.00	
	04/07/11	CLE Update/Ethics	Topeka, KS	1.00	1.00
	06/17/11	Johnson Co. Law & Ethics	Olathe, KS	2.00	1.00
Kasey Rogg	08/25/10	Changes in KS Civil Procedure Code		.50	
	9/23/10	Healthcare Fraud Trends, Etico	Webinar	.50	
	10/25/10	2010 Annual Training, NAMFCU	Tempe, AZ	12.00	
	04/07/11	Advising Clients on Sexual Harassment	Topeka, KS	1.00	
	04/07/11	CLE Update/Ethics	Topeka, KS	1.00	1.00
	06/17/11	Johnson Co. Law & Ethics	Olathe, KS	1.00	1.00
Amanda Voth	04/07/11	CLE Update/Ethics	Topeka, KS	1.00	1.00
	06/17/11	Johnson Co. Law & Ethics	Olathe, KS	2.00	1.00

APPENDIX C
OFFICE OF THE KANSAS ATTORNEY GENERAL
MEDICAID FRAUD AND ABUSE DIVISION

TRAINING 7/1/2010 – 6/30/2011

ATTENDEE	DATE	TRAINING & SPONSOR	LOCATION	TOTAL HOURS	ETHICS
Phil McManigal	10/01/10	Firearms Training	Perry, KS	2.00	
	10/05/10	Missing/Unidentified Persons	Topeka, KS	3.00	
	10/26/10 thru 10/28/10	NAMFCU Conference	Tempe, AZ	10.00	
	03/24/11	Toxicology Protection by Law Enforcement	Topeka, KS	1.00	
	04/07/11	Sexual Harassment Prevention	Topeka, KS	1.00	
	05/18/11 & 05/19/11	M-Squad Training	Lawrence, KS	16.00	
	05/24/11	Racial & Bias-Based Policing	Topeka, KS	1.00	
	05/26/11	4 th Quarter Firearms Training	Perry, KS	2.00	
	06/10/11	USAO Training	Kansas City, KS	6.00	
	06/17/11	4 th Quarter Firearms Training	Silver Lake, KS	1.50	
Earl Baxter	10/01/10	Firearms Training	Perry, KS	2.00	
	10/26/10 & 10/27/10	Basic Financial Investigation Techniques	Topeka, KS	16.00	
	01/25/11	Winter 2010 Workshop	Overland Park, KS	4.00	
	04/07/11	Sexual Harassment Prevention	Topeka, KS	1.00	
	04/08/11	Racial & Bias-Based Policing	Topeka, KS	1.00	

APPENDIX C
OFFICE OF THE KANSAS ATTORNEY GENERAL
MEDICAID FRAUD AND ABUSE DIVISION

TRAINING 7/1/2010 – 6/30/2011

ATTENDEE	DATE	TRAINING & SPONSOR	LOCATION	TOTAL HOURS	ETHICS
	05/26/11	4 th Quarter Firearms Training	Perry, KS	2.00	
	06/27/11 & 06/30/11	Diversion Investigation Training	Maryland Heights, MO	19.00	
Darren Brown	10/01/10	Firearms Training	Perry, KS	2.00	
	03/29/11 thru 03/31/11	Pain Management, etc.	New Orleans, LA	21.00	
	04/07/11	Sexual Harassment Prevention	Topeka, KS	1.00	
	04/08/11	Racial & Bias-Based Policing	Topeka, KS	1.00	
	06/07/11	Firearms Training	Sugar Creek, MO	2.50	
	06/17/11	4 th Quarter Firearms Training	Silver Lake, KS	1.50	
	06/27/11 & 06/30/11	Diversion Investigation Training	Maryland Heights, MO	19.00	
Mark Montague	10/01/10	Firearms Training	Perry, KS	4.00	
	10/26/10	Basic Financial Investigation Techniques	Topeka, KS	16.00	
	04/07/11	Sexual Harassment Prevention	Topeka, KS	1.00	
	04/08/11	Racial & Bias-Based Policing	Topeka, KS	1.00	
	05/17/11 thru 05/19/11	M-Squad Training	Lawrence, KS	24.00	

APPENDIX C
OFFICE OF THE KANSAS ATTORNEY GENERAL
MEDICAID FRAUD AND ABUSE DIVISION

TRAINING 7/1/2010 – 6/30/2011

ATTENDEE	DATE	TRAINING & SPONSOR	LOCATION	TOTAL HOURS	ETHICS
	05/26/11	4 th Quarter Firearms	Perry, KS	2.00	
	06/07/11	Firearms Training	Sugar Creek, MO	2.50	
Terry Symonds	07/12/10 thru 07/14/10	Electronic Training	Hutchinson, KS	24.00	
	10/01/10	Firearms Training	Perry, KS	2.00	
	10/25/10 & 10/26/10	Cyber Investigation	Colby, KS	21.50	
	01/25/11	Winter 2010 Workshop	Overland Park, KS	4.00	
	04/07/11	Sexual Harassment Prevention	Topeka, KS	1.00	
	04/08/11	Racial & Bias-Based Policing	Topeka, KS	1.00	
Dave Unger	07/06/10	KJOA Conference	Topeka, KS	26.50	
	10/01/10	Firearms Training	Perry, KS	2.00	
	10/25/10 & 10/26/10	Cyber Investigation	Colby, KS	21.50	
	03/01/11 thru 03/03/11	101 Training	Santa Fe, NM	15.25	
	04/07/11	Sexual Harassment Prevention	Topeka, KS	1.00	
	04/08/11	Racial & Bias-Based Policing	Topeka, KS	1.00	
	05/26/11	4 th Quarter Firearms Training	Perry, KS	2.00	

APPENDIX C
OFFICE OF THE KANSAS ATTORNEY GENERAL
MEDICAID FRAUD AND ABUSE DIVISION

TRAINING 7/1/2010 – 6/30/2011

ATTENDEE	DATE	TRAINING & SPONSOR	LOCATION	TOTAL HOURS	ETHICS
	06/17/11	4 th Quarter Firearms Training	Silver Lake, KS	1.50	
Cam McKinney	10/26/10 & 10/27/10	Basic Financial Investigation Techniques	Topeka, KS	16.00	
Mark Knight	10/08/10	CLE Seminar	Topeka, KS	6.00	
	10/15/10	Sexual Harassment Awareness Training	Topeka, KS	1.00	
	04/07/11	CLE Seminar	Topeka, KS	3.00	
	04/22/11	CLE Seminar	Topeka, KS	6.00	

APPENDIX D
OFFICE OF THE KANSAS ATTORNEY GENERAL
MEDICAID FRAUD AND ABUSE DIVISION

PRESENTATIONS 7/1/2010 – 6/30/2011

PRESENTER	DATE	EVENT	TITLE	PEOPLE
Loren F. Snell, Jr.	8/20/10	Kansas Adult Care Executives Association 38 th Annual Convention, Wichita, KS	Investigative Strategies in Abuse and Exploitation Cases	87
Loren F. Snell, Jr.	9/28/10	Kansas Association of Healthcare Services for the Aging, Fall Regulatory and Policy Conference, Junction City, KS	Responding to Fiduciary Abuse: Exploitation of the Elderly	22
Jabari Wamble	10/26/10	Area Agency on Aging Conference, Garden City, KS	Undue Influence and Financial Exploitation	??
Jabari Wamble	10/27/10	Area Agency on Aging Conference, Great Bend, KS	Undue Influence and Financial Exploitation	??
Loren F. Snell, Jr. and Phillip McManigal	10/28/10	NAMFCU 2010 Annual Conference, Tempe, AZ	Investigating Drug and Alcohol Abuse Treatment Centers	125+
Loren F. Snell, Jr.	3/16/11	Elder Abuse Seminar, El Dorado, KS	Financial Exploitation, Fiduciary Abuse – More Than Just a Civil Matter	82
Stefani K. Hepford and Phillip	3/30/11	Kansas Adult Care Executives Association	Crimes Against the Elderly	65

APPENDIX D
OFFICE OF THE KANSAS ATTORNEY GENERAL
MEDICAID FRAUD AND ABUSE DIVISION

PRESENTATIONS 7/1/2010 – 6/30/2011

McManigal		Spring Conference, Topeka, KS		
Loren F. Snell, Jr.	3/30/11	NAMFCU Director's Symposium, Washington, DC	Panel Discussion – Working Groups	53
Stefani K. Hepford	4/15/11	Manhattan, KS	Medicaid Fraud and Identity Theft	12
Loren F. Snell, Jr.	4/27/11	2011 Crime Victim's Rights Conference, Wichita, KS	Abuse, Neglect and Exploitation of Vulnerable Adults	60
Loren F. Snell, Jr.	5/4/11	The Elder Years: Happy, Healthy and Safe, Independence, KS	Investigative Process of Crimes Against the Elderly	78
Loren F. Snell, Jr.	6/21/11	ValueOptions Provider Training Session, Topeka, KS	Kansas Attorney General's Medicaid Fraud Control Unit	52