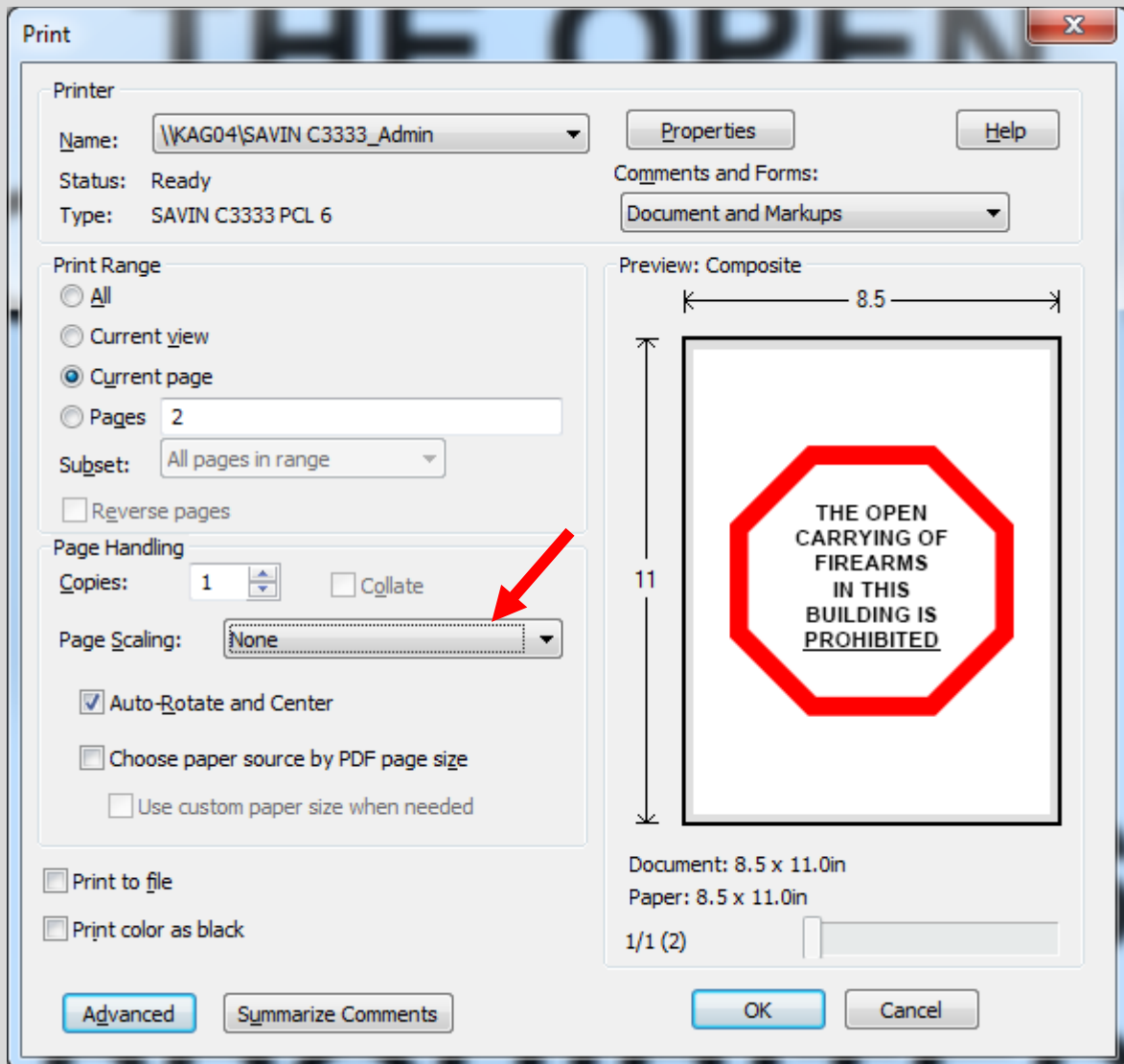


Open Carry Prohibited Proposed Signage Adopted by the Kansas Attorney General Effective July 1, 2014

PRINTING INSTRUCTIONS

To ensure that the graphic prints at the size required by the regulation, in the PDF print dialog window, be sure that **“Page Scaling”** is set to **“None.”**





**THE OPEN
CARRYING OF
FIREARMS
IN THIS
BUILDING IS
PROHIBITED**