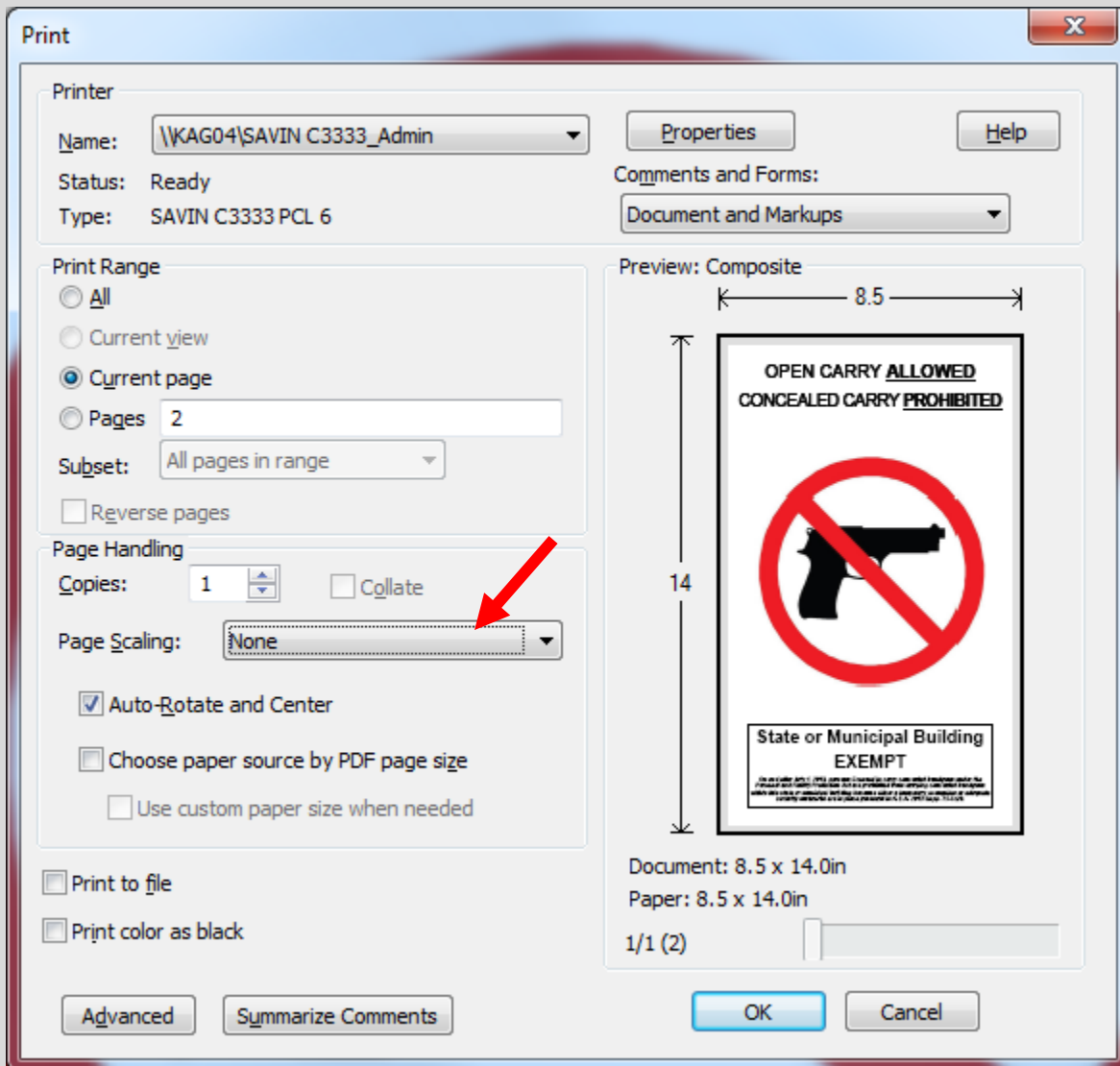


# Exempt State and Municipal Buildings Open Carry Allowed – Concealed Carry Prohibited Proposed Signage Adopted by the Kansas Attorney General Effective July 1, 2014

## PRINTING INSTRUCTIONS

To ensure that the graphic prints at the size required by the regulation (6” diameter), in the PDF print dialog window, be sure that “**Page Scaling**” is set to “**None.**” This sign is formatted for **legal-sized paper**.



OPEN CARRY ALLOWED

CONCEALED CARRY PROHIBITED



**State or Municipal Building  
EXEMPT**

*On and after July 1, 2013, persons licensed to carry concealed handguns under the Personal and Family Protection Act are prohibited from carrying concealed handguns within this state or municipal building because either a temporary exemption or adequate security measures are in place pursuant to K.S.A. 2013 Supp. 75-7c20.*